



Aboriginal Cultural Heritage Due Diligence Assessment Crackenback Ridge Water Supply Upgrade



Report Prepared for Kosciuszko Thredbo Pty Ltd

18 November 2024

Document Control

Revision	Date	Author	Reviewed
V1.0	18/11/2024	L. O'Brien	Kosciusko Thredbo

Disclaimer

Past Traces Pty Ltd has undertaken this assessment in accordance with the relevant Federal, State and Local Government legislation. Past Traces accepts no liability for any damages or loss incurred as a result of use for any purpose other than that for which it was commissioned.

Copyright of the report remains the property of Past Traces Pty Ltd. This report may only be used for the purpose for which it was commissioned.

Restricted Information

Information contained within this report is culturally sensitive and should not be made publically available. The information that is restricted includes (but is not limited to):

- ❖ Maps, Mapping Grid Reference Co-ordinates or images for Aboriginal heritage sites, places and objects.
- ❖ Location or detailed information regarding places of Aboriginal cultural significance, as expressed or directed by Representative Aboriginal Organisations, Aboriginal elders, or members of the wider Aboriginal community.
- ❖ Other culturally appropriate restricted information as advised by Aboriginal representatives and traditional knowledge holders.

Information in the report covered by the above categories should be redacted before being made available to the general public. This information should only be made available to those persons with a just and reasonable need for access.

CONTENTS

EXECUTIVE SUMMARY i

1	INTRODUCTION	1
1.1	PROJECT OBJECTIVES.....	1
1.2	ABORIGINAL CONSULTATION.....	2
2	DESKTOP ASSESSMENT RESULTS.....	5
2.1	ABORIGINAL HERITAGE INFORMATION MANAGEMENT SYSTEM (AHIMS) SEARCH	5
2.2	PREVIOUS HERITAGE STUDIES.....	7
2.2.1	Predictive Model	9
2.3	LANDFORM AND DISTURBANCE LEVEL ASSESSMENT	10
3	FIELD SURVEY RESULTS	11
3.1	ADDITIONAL WATER TANK LOCATION.	11
3.2	RESULTS - ABORIGINAL HERITAGE SITES	13
4	RECOMMENDATIONS.....	15
5	REFERENCES.....	16

EXECUTIVE SUMMARY

Kosciuszko Thredbo Pty Ltd are proposing to upgrade the Crackenback Ridge Water Supply, located to the north west of the Thredbo Village at the end of Cascade Close. The project area is located on steep middle slopes adjacent to the current water tank location. Works will be limited to the adjacent area where previous impacts have resulted from the current tank installation and will use the existing fire trail to access the project location.

The proposal to upgrade the water supply system, will consist of the following works:

- ❖ Installation of new water tank adjacent to the current water tank on the east
- ❖ Removal of vegetation and soils in area of tank installation
- ❖ Under ground pipeline to current pumphouse

The proposed location of works is shown in Figure 1.

This Due Diligence heritage assessment has been undertaken in accordance with the *Due Diligence Code of Practice for the Protection of Aboriginal Objects in NSW* (DECCW 2010a) to provide Kosciuszko Thredbo Pty Ltd with information on heritage constraints to inform the development process.

Based on a review of previous reports and an Aboriginal Heritage Information Management Systems (AHIMS) search, no heritage sites and no areas of Potential Archaeological Deposit (PAD) were identified within the project area.

Field survey was undertaken across the project area in accordance with the *Code of Practice for Archaeological Investigation of Aboriginal Objects in NSW* (DECCW 2010b). The field survey covered the water tank and pipeline alignment, with particular focus on the trees listed for removal and the degree of previous disturbance.

Ground visibility was low to moderate at the time of field survey, due to the presence of vegetation coverage. The tank and pipeline are placed within moderate to steep gradient terrain within disturbed soils from previous tank construction and vegetation removal.

The field survey identified no Aboriginal heritage sites or areas of potential due to the steepness of the landforms, located on low potential landforms and the high degree of previous impacts.

As a result of the desktop review and field inspection the following recommendations have been developed:

- ❖ There are no known heritage sites or areas of PAD within the project area. There are no heritage constraints on the project.
- ❖ It is an offence to disturb an Aboriginal site without an AHIP as all Aboriginal objects are protected under the NSW National Parks and Wildlife Act 1974. Should any Aboriginal objects be encountered during works then works must cease and a heritage

professional contacted to assess the find. Works may not recommence until cleared by NSW Heritage.

- ❖ Further archaeological assessment would be required if the proposal activity extends beyond the area of the current investigation. This would include further field survey.

1 INTRODUCTION

Kosciuszko Thredbo Pty Ltd are proposing to upgrade the Crackenback Ridge Water Supply, located to the north west of the Thredbo Village at the end of Cascade Close. The project area is located on steep middle slopes adjacent to the current water tank location. Works will be limited to the adjacent area where previous impacts have resulted from the current tank installation and will use the existing fire trail to access the project location.

The proposal to upgrade the water supply system, will consist of the following works:

- ❖ Installation of new water tank adjacent to the current water tank on the east
- ❖ Removal of vegetation and soils in area of tank installation
- ❖ Under ground pipeline to current pump house

The proposed location of works is shown in Figure 1 in a regional context and in detail in Figure 2.

To assess the potential impacts of the proposed works on Aboriginal heritage this Due Diligence Heritage Assessment has been undertaken.

This Due Diligence heritage assessment has been undertaken in accordance with the *Due Diligence Code of Practice for the Protection of Aboriginal Objects in NSW* (DECCW 2010a) to provide Kosciuszko Thredbo Pty Ltd with information on heritage constraints to inform the development process.

1.1 PROJECT OBJECTIVES

The due diligence assessment is being undertaken to complete the following objectives:

1. Review of the NSW Heritage, Aboriginal Heritage Information Management System (AHIMS), to identify any recorded heritage sites within the project area.
2. Review of previous reports in area to develop predictive model of site location
3. Assess landforms present in project area against predictive model to determine potential for heritage sites and determine level of disturbance
4. Complete site visit to visually inspect impact areas or areas assessed as holding potential based on predictive model and record any identified heritage sites. The site visit will also document levels of disturbance within project area.
5. Complete due diligence report with management recommendations to avoid or minimise impacts within the project area.

1.2 ABORIGINAL CONSULTATION

No consultation with the local Aboriginal community has been undertaken to inform this report. Consultation with the Aboriginal community is not a requirement of the Due Diligence Code of assessment, which is undertaken at the preliminary planning stage of the project.

If the assessment finds that impacts to Aboriginal heritage will occur as a result of the development then consultation will be undertaken with the relevant Local Aboriginal Land Council (LALC) and the wider Aboriginal community, in accordance with the consultation guidelines required by NSW Heritage.

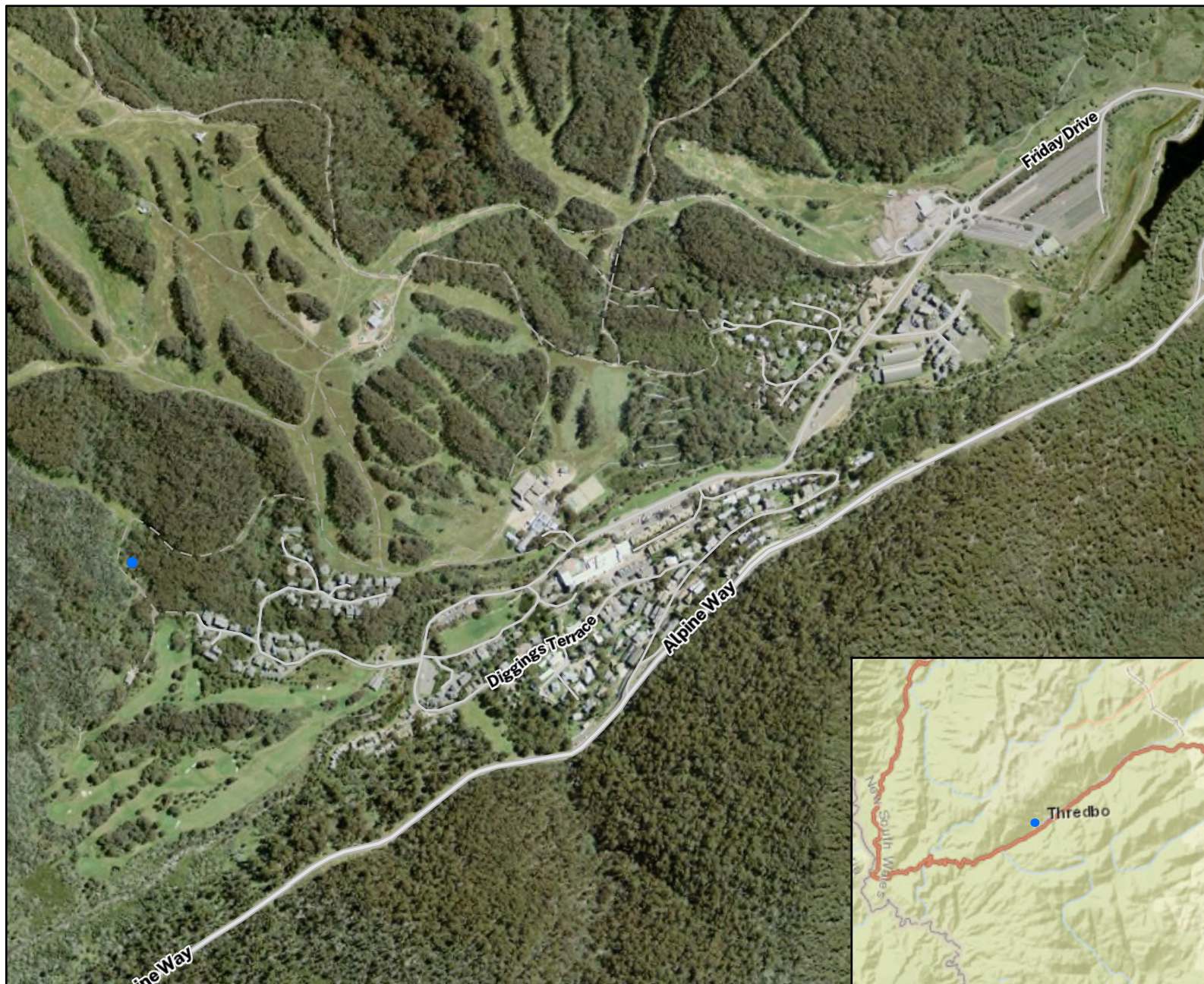
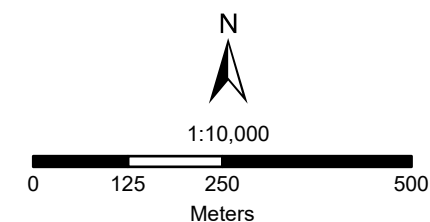


Figure 1: Regional Context

Legend

 New Tank & Footings



Coordinate System:
GDA 1994 MGA Zone 55

Imagery: © Nearmap

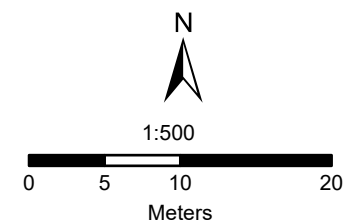
PastTraces
Heritage Consultants



Figure 2: Project Area

Legend

-  Trees
-  New Tank & Footings
-  Earthworks
-  Trench



Coordinate System:
GDA 1994 MGA Zone 55

Imagery: © Nearmap

PastTraces
Heritage Consultants

2 DESKTOP ASSESSMENT RESULTS

2.1 ABORIGINAL HERITAGE INFORMATION MANAGEMENT SYSTEM (AHIMS) SEARCH

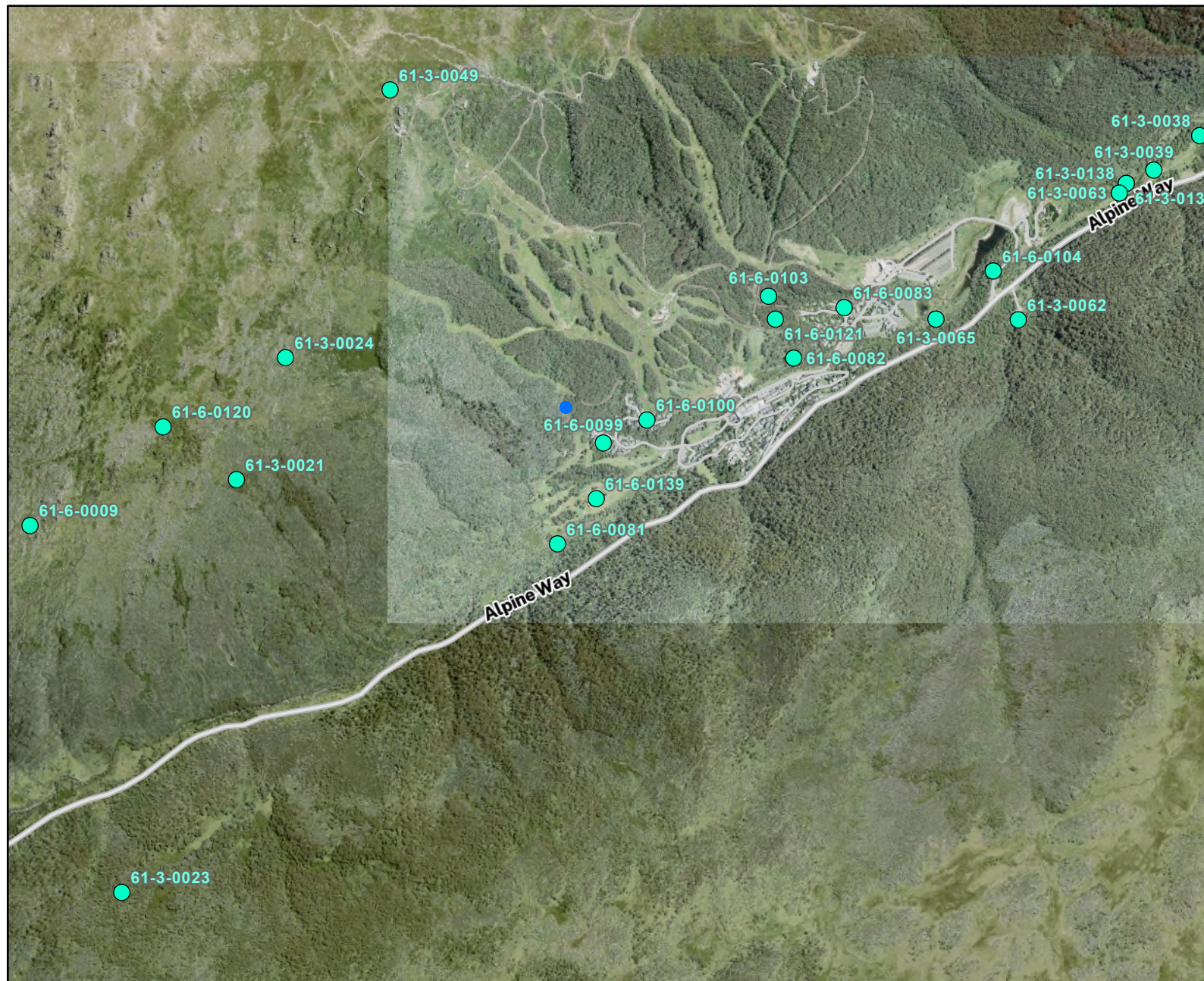
A search of the NSW Heritage AHIMS database was undertaken on the 19 November 2024 covering the approximate 1km surrounding area centred on the project area. The extensive search revealed 22 previously recorded heritage sites near the project area. No previous heritage site has been located within the Project Area.

The sites located in this area are provided in Table 1 and consist of isolated finds, artefact scatters, and area of PAD and several identified campsites and conform to the wider site predictive model for the Thredbo Valley/Kosciusko area (NOHC 2000, Grinsbergs 2008, Ironbark 2013, OzArk 2021). This model predicts a site location model of small sites located on level ground in proximity to water sources, or on level areas of spur lines, saddles and ridge crests amongst mountainous areas. This predictive model is discussed in more detail in Section 2.2. The location of previously recorded sites is shown in Figure 3.



Table 1. AHIMS Site Types

Site Type	Number	Percentage
Isolated find	3	14%
Open camp site	18	82%
PAD	1	5%

Figure 3: AHIMS



Legend

-  New Tank & Footings
-  AHIMS



1:25,000

0 305 610 1,220
Meters

Coordinate System:
GDA 1994 MGA Zone 55

Imagery: © Nearthmap

PastTraces
Heritage Consultants

2.2 PREVIOUS HERITAGE STUDIES

An extensive number of heritage studies have been undertaken in the immediate area of the Thredbo Valley. These have been mainly small scale and development focused. Studies covering a larger area and generating models of occupation have been undertaken in the Perisher Valley (NOHC 2000) and Thredbo (Ironbark 2013, OzArk 2021). A review of this large body of work has been undertaken to provide context and site location modelling for the project area. The most relevant reports for the current project are summarised below from this large body of work.

Paton (1985) completed a survey along the Thredbo River valley between the Ranger Station and Dead Horse Gap for the Alpine Way upgrade. This survey covered a range of differing landforms located on site on area of level ground amongst spur line. A locational model of site location on level areas was theorised.

Walkington (1988) completed a survey for a proposed 33kV powerline from Bullocks Flat to Thredbo identifying 11 artefact scatters and two isolated finds. Almost all of the sites found were situated on gently sloping ground such as spurs elevated above the river.

Paton (1988) surveyed the Thredbo Valley for a fibre optic cable route again crossing differing topographies in the area. Paton located a further two site during this assessment which supported his earlier location model.

Fuller (1988) completed a survey of the proposed development areas in Thredbo Village recording seven archaeological sites all consisting of isolated finds or small artefact scatters. The sites were located on level areas on basal and midslopes. Fuller concludes that all of the sites are typical of high-altitude sites in being low-density artefact scatters (1988:7).

Navin and Officer completed two surveys of the Thredbo valley, one for the Alpine Way in 1992 and the other for the Thredbo Alpine Village in 1994. A number of small sites were located, conforming to the site models being isolated finds or small artefact scatters located on level areas or gradual slopes within basal contexts.

Dearling (1997) surveyed a 2 hectare area, for a proposed ski run at Thredbo. He located one site (#61-6-103), which consisted of five artefacts. It was situated on a cleared service road on the crest of a spur in a minor saddle with Merritt's Creek to the south and an unnamed creek to the north. The level location and proximity to creek lines again conform to the modelling for the region. This site is the closest to the current project area but well outside of any area of impact.

NOHC in 2000 completed a large scale and extensive field surveys and subsurface testing of landforms for the Perisher Blue Ski Resort. This study resulted in the development of a site location model which is equally applicable to the Thredbo region as similar topography and landscape features are present. Navin Officer Heritage Consultants concluded that the strongest site determinants were:

- Relatively level, well drained ground
- Shelter from prevailing weather patterns (mainly from the west and northwest)
- Avoidance of cold air drainage contexts

- Preference for terrain which facilitates pedestrian access and through travel
- Proximity to exploitable resources such as open woodland, grassland and herb fields and Bogong moth aestivation sites (2000:41).
- Majority of sites would be small artefact scatters of less than 15 artefacts, found throughout landscape
- Larger sites (minority) would be located on crests of ridges and major spur lines or more commonly on basal valley slopes. The larger sites decreased in artefact density the higher the location from the basal slopes (NOHC 2000:41).

Dibden (2003) completed a survey of proposed upgrade works for Antons and Sponnars T-bars at Thredbo. No sites were found, due to previous disturbance from clearing, land modification for grooming of ski slopes and the fact that the study corridor was located on steep, mid to upper slopes with low archaeological potential (2003:1).

Aecom (Formerly HLA) throughout 2004 and 2005 completed a series of survey and excavations for a proposed works depot at Friday Flat, located on level basal slopes and within a recorded site location (NOHC 1992). The excavations were placed in six differing locations and recovered 99 artefacts.

Grinsbergs (2008) completed a survey for the proposed multi-use trail from Bullocks Flat to Thredbo along the Thredbo Valley floor, which identified 21 sites, comprising 11 artefact scatters, nine isolated artefacts and a grinding groove as well as two areas of potential archaeological deposit. Based on the site locations Grinbergs concludes that general model of site location with sites on level areas in basal contexts and not located on slopes was applicable.

Ironbark Heritage (2013) completed a due diligence assessment for the Thredbo Mountain Bike Trails which included the development of a GIS Slope analysis model. This assessment showed slopes of more than 10 degrees as not being conducive to Aboriginal usage and holding low potential for sites and subsurface deposits. This study included the current project area through which the trail passes.

NGH (2017) completed an Aboriginal heritage due diligence assessment for the Thredbo Mountain Bike Trails covering three new trail locations. The terrain features within the project area were mostly steep slopes, with few potential areas of sensitive landforms. No sites or areas of potential were identified, and the study concluded that the potential for the presence of Aboriginal sites is low due to the level of disturbance associated with previous ski slope work and the general steepness of the terrain.

Past Traces Pty Ltd (2018) completed three heritage assessment for the Thredbo Alpine Resort in regard to the upgrade and redevelopment of the Merritt's Mountain House Restaurant Thredbo NSW, the extension of visitor car park facilities at Friday Flat at Thredbo and the demolition and construction of a new building complex (retail/hospitality) on the site of the Thredboland building. All these three assessments did not locate any Aboriginal heritage sites or areas of Potential Archaeological Deposit (PAD) within the area.

OzArk (2021) completed the regional assessment of the Snowy Mountains Special Activation Precinct (SAP). The assessment area covered 72,211ha of which 330 were surveyed. One of these areas at Thredbo was south of the current project area. No sites were identified with a general ranking of low potential based on gradient with moderate to high areas mapped on the flatter river flats close to Thredbo River. These areas will not be impacted by the current works.

Past Traces Pty Ltd (2022) completed a heritage assessment for the subdivision and redesign of the Thredbo Golf course located at 2/4 Crackenback Drive, Thredbo, New South Wales 2625, Lot 876/DP1243112. The survey located one Aboriginal heritage sites with an associated area of potential archaeological deposit (PAD). Subsurface testing showed no deposits with the surface artefacts, consisting of quartz flakes being in a secondary location due to the land forming resulting from the golf course construction.

Past Traces in 2023 conducted an assessment for the proposed upgrade to the Snowgums Chairlift to provide increased capacity and quality infrastructure. The project area was located predominately within the existing impacted Snowgums Chairlift corridor, at Thredbo, NSW on steep slopes. Based on the models of site location the areas was classified as low potential and this assessment did not identify any new heritage sites or areas of PAD.

2.2.1 Predictive Model

This site prediction model is based on:

- ❖ Site distribution in relation to landscape features within the project area
- ❖ Consideration of site type and densities likely to be present within the project area
- ❖ Slope gradients based on Ironbark (2013) and NOHC (2000).

Table 2 Site Prediction Model

Probability	Site Type	Definition	Landform
Low	Isolated finds and surface scatters of stone artefacts	Stone artefacts ranging from single artefact to high numbers	Elevated level landforms in proximity to water sources – Project area is located on moderate slopes in disturbed areas.
Low	Potential Archaeological Deposits (PADS)	Area considered on landform to hold higher potential for unidentified subsurface deposits	On creek flats or level areas of saddles or crests. Project area confined to slopes – disturbed location
Nil	Culturally Modified Trees (CMTs)	Trees which have been modified by scarring, marking or branch twining	Alpine species not applicable.
Nil	Rock Engravings	Images engraved on flat rock surfaces	Escarpments, rock platforms or rock shelters - not present

Probability	Site Type	Definition	Landform
Nil	Stone arrangements	Arrangements of stones by human intention, including circles lines or patterns.	Crest lines or large ceremonial areas on creekflats, - not present
Nil	Stone quarries/Ochre sources	Quarry sites where resources have been mined.	Any landform that has not been disturbed – not present
Nil	Axe grinding grooves	Grooves in stone caused by the grinding of stone axes	Usually in creek lines, as water is used as abrasive with sand - not present

2.3 LANDFORM AND DISTURBANCE LEVEL ASSESSMENT

The project area consists of moderately steep terrain on middle slopes above the Thredbo Village Location. Based on the predictive model developed by Ironbark (2013) and refined by OzArk (2021) these slopes hold low potential for Aboriginal heritage sites, due to their slope gradient. The current water tank, pump house and fire trail access are heavily disturbed from previous construction. This high level of disturbance further reduces heritage potential.

In summary, based on the desktop assessment, the project area is considered to hold low potential for heritage sites. Verification of this finding of low potential and high impact are the main aims of the visual inspection (field survey) of the project area detailed in the following section.

3 FIELD SURVEY RESULTS

A field survey of the project area was undertaken on the 5 November 2024, to verify the findings of the desktop review of landforms and disturbance. The aim of the investigation was to identify heritage objects or places of potential archaeological Deposit (PAD). Based upon the background research, known Aboriginal site patterning, and current aerial photography, both of the proposed trail alignments were inspected.

All surveyed areas and items of interest were recorded on a topographic map of the study area (using a GPS and GDA 94 coordinates), along with levels of visibility, erosion, soil conditions, and evidence of land disturbance.

Ground surface visibility (GSV) is the percentage of ground surface that is visible during the field inspection. GSV increases in areas of exposures such as access roads, cleared areas, mountain bike trails, and along areas of erosion. As a result, surveys undertaken in areas with high exposure rates result in a more effective survey coverage.

The site visit resulted in the following findings.

3.1 ADDITIONAL WATER TANK LOCATION.

The current water tank is located adjacent to the main fire trail leading from Cascade Close and ascending the middle to upper slopes. The water tank and current pump house are located within mid slopes with steep gradient slopes. Vegetation removal and soil displacement has occurred due to the previous works of tank and pipeline which is evident in mounds of displaced soils within the current footprint of the proposed additional tank (Plate 4) .

Due to the high level of disturbance and the slope gradient the area of the proposed water tank and pipeline have been assessed as holding low potential. This was confirmed by the field survey with no indications of surface sites or subsurface potential. Trees present in the area were assessed for cultural scarring with none of the trees being of an age or appropriate species. No evidence of any cultural scarring was observed on any of the trees.

As a result of the survey, no heritage sites or areas of potential were identified. Exposures are present in limited small areas of erosion and exposed soils. The general GSV in the area is considered low due to vegetation coverage at 35%.

The conditions at the time of the field survey are shown in plates 1 to 6.



Plate 1. Current pumphouse and water tank – note benched areas for placement



Plate 2. Proposed tank location amidst displaced soils from benching



Plate 3. Vegetation coverage on slopes



Plate 4. Example of mounded soils



Plate 5. Pump House



Plate 6. Current access fire trail

3.2 RESULTS - ABORIGINAL HERITAGE SITES

Modelling of landforms within the Thredbo region (NOHC 2000, Ironbark 2013, OzArk 2021) have clearly identified slope gradient as a major determinant of site location. Simple moderate to steep gradient slopes are not conducive to utilisation and are considered to hold low potential. These findings have also been confirmed by the numerous surveys undertaken in the region and listed in Section 2.2. NGH (2017) undertook a large survey for Mountain Bike Trails in the region confirming the earlier modelling.

As a result, the gradients on which the current water tank and proposed tank do not hold high potential and the locations of current water supply infrastructure, access points and surrounds have been highly impacted by previous works. The previous installation of the water tank, pumphouse and underground pipeline and construction of benching to allow placement (see Plate 1) and access have resulted in mounds of displaced soils in the adjacent areas (now overgrown) and level areas in each structure location (see Plate 4).

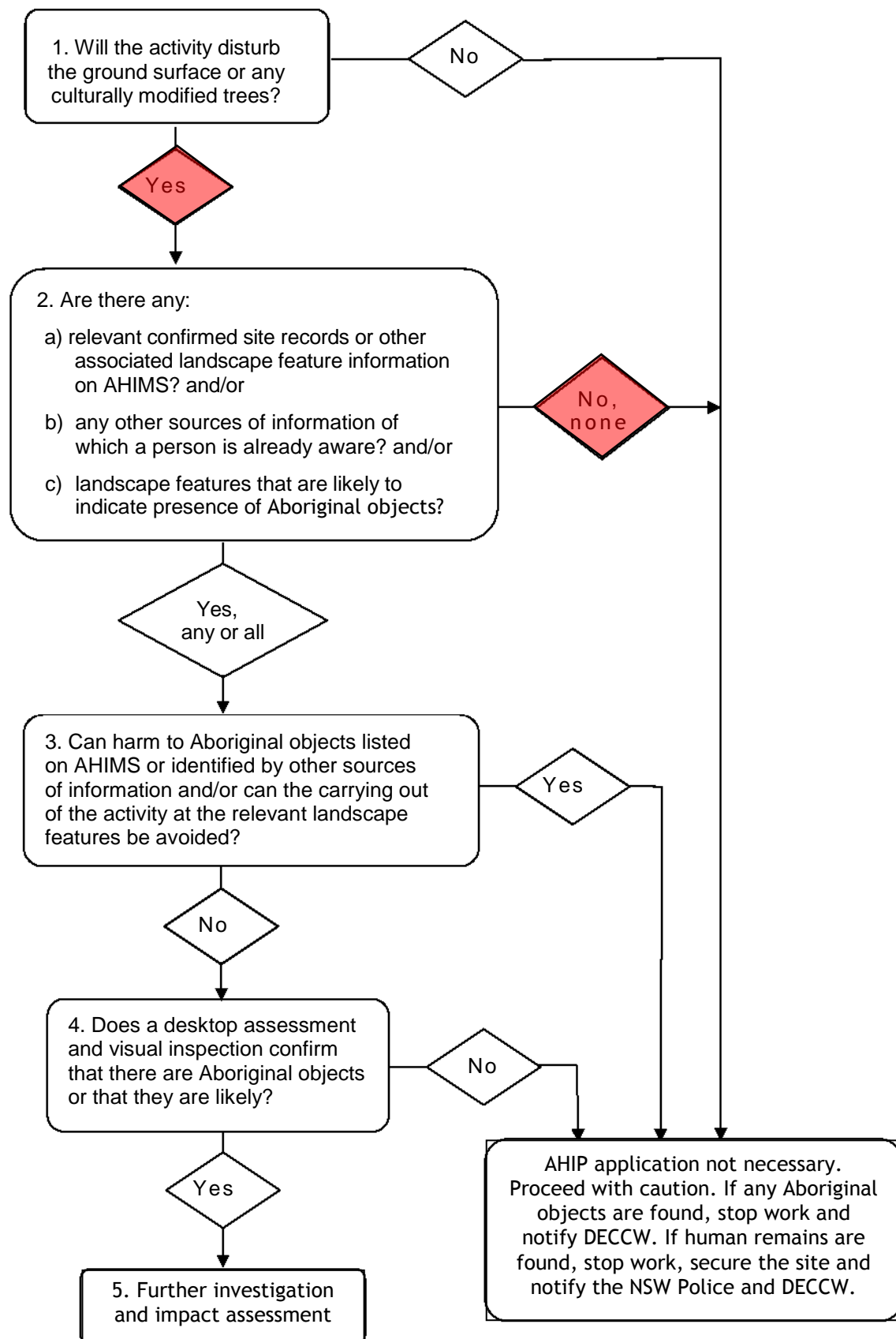
GSV at the time of the field survey was considered to be low. No areas of Aboriginal potential or heritage sites were identified by the field survey and the project is considered to hold low potential to impact on unrecorded Aboriginal heritage sites.

Based on the assessment the impacts from the project are as follows:

- ❖ No known Aboriginal objects or places are present in the project area
- ❖ No known Historical sites or places are present in the project area.
- ❖ No areas of high potential to contain unrecorded Aboriginal or historical objects or places are present in the project area.

The Aboriginal Due Diligence Code provides a flowchart of five questions to identify the presence of and potential harm to Aboriginal heritage. These questions and their applicability to the project are shown in Figure 4. The responses to these questions determine if further heritage investigations are required.

Figure 4. Due Diligence Flow Diagram (OEH 2010:10 – Due Diligence Code of Practice)



4 RECOMMENDATIONS

Based on this due diligence assessment the following actions are recommended for the project:

Recommendation 1: Works to proceed without further heritage assessment with caution.

The proposed works can proceed without further assessment as no Aboriginal or historical heritage sites (objects or places) have been identified within the project area. The potential for impacting on unrecorded heritage sites within the project area is assessed as extremely low, based on landform analysis, high degree of past disturbance and field survey.

Recommendation 2: Discovery of Unidentified Aboriginal cultural material during works.

Under the *NPW Act 1977* all Aboriginal places and objects are protected from harm, even if they have not been previously identified during the assessment process. If Aboriginal material is discovered during works then the steps as outlined below should be followed:

- ❖ All work must cease in the vicinity of the find and project manager notified immediately.
- ❖ A buffer zone of 10m should be fenced in all direction of the find and construction personnel made aware of the 'no go' zone.
- ❖ NSW Heritage must be notified of the find and advice sought on the proper steps to be undertaken.
- ❖ After confirmation with NSW Heritage a heritage consultation should be engaged to undertake assessment of the find and provide appropriate management recommendations to the proponent.

Recommendation 3: Alteration of impact footprint

Further archaeological assessment would be required if the proposal activity extends beyond the area of the current investigation.

Implementation of the above management recommendations will result in low potential for the project to impact on heritage values or result in damage to heritage sites.

5 REFERENCES

- Dearling, C. (1997). Cultural Heritage Survey Proposed 'Easy Does It' Ski Run Improvement Works Thredbo. Report to Kosciusko Thredbo Pty Ltd.
- DECCW. (2010). Due Diligence Code of Practice for the Protection of Aboriginal Objects in New South Wales. Sydney: DECCW.
- Fuller, N. (1988). An Archaeological Assessment of Potential Development Areas in Thredbo Village. Report to Margule and Partners.
- Geering, K. (1983). Archaeological Suvey Appendix J in Hogg 1983. Perisher Skitube Skifields Access System EIS.
- Grinbergs, A. (2008). Preliminary Aboriginal Cultural Heritage Assessment Proposed Thredbo to Bullocks Multi-Use track. Report to Dept of Environment and Climate Change.
- HLA- Environsciences. (2004). Indigenous Heritage Assessment: Snow Clearing Depot Friday Flat, Thredbo. Report to NSW Road and Traffic Authority.
- HLA Environsciences. (2005). Preliminary Research Permits #2071 and 2072: Excavations and Findings at Friday Flat Snow Clearing Depot Thredbo NSW. Report to National Parks and Wildlife Service .
- Ironbark Heritage. (2013). A Cultural Heritage Due Diligence Assessment for Thredbo Bike Trails Stage 1 Kosciusko National Park. Report to Dabyne Planning Pty Ltd.
- Navin Officer Heritage Consultants. (1992). *Archaeological Survey: Alpine Way, Kosciusko National Park NSW*. Report to NSW National Park and Wildlife Service.
- Navin Officer Heritage Consultants. (2000). *Perisher Range Resorts Area Aboriginal Cultural Heritage Study*. Report to Connell Wagner Pty Ltd.
- NSW Archaeology. (2003). Electric Driver Conversion of Antons and Spooners T-Bar lifts Thredbo NSW. Report to NGH Environmental.
- NSW Archaeology. (2004). Tower 10 Ski run proposed works, Thredbo NSW Aboriginal Archaeological Assessment. Report to URS Australia Pty Ltd.
- Past Traces Pty Ltd (2018), Aboriginal Cultural Heritage Due Diligence Assessment, Merrits Mountain House Restaurant- Redevelopment. Report prepared for Event Hospitality Pty Ltd.
- Past Traces Pty Ltd (2018), Aboriginal Cultural Heritage Due Diligence Assessment, Friday Flat Carpark Proposed Extensions, Report prepared for Event Hospitality Pty Ltd.
- Past Traces Pty Ltd (2018), Aboriginal Cultural Heritage Due Diligence Assessment, Thredboland Facility Redevelopment. Report prepared for Event Hospitality Pty Ltd.
- Past Traces Pty Ltd (2020), Aboriginal Cultural Heritage Due Diligence Assessment, Mt Perisher Chairlift Redevelopment Perisher Ski Resort, Report prepared for Perisher Ski Resort.

- Past Traces Pty Ltd (2020), Aboriginal Cultural Heritage Due Diligence Assessment, The Cleft Ski Run Snowmaking, Centre Valley, Perisher Ski Resort, Report prepared for Perisher Ski Resort.
- Past Traces Pty Ltd (2022), Aboriginal Cultural Heritage Due Diligence Assessment, Thredbo Golf Course, Report prepared for Kosciuszko Thredbo Pty Ltd.
- Past Traces Pty Ltd (2023), Aboriginal Cultural Heritage Due Diligence Assessment, Thredbo Snowgums Chairlift Upgrade. Report prepared for Kosciuszko Thredbo Pty Ltd.
- Paton, R. (1984). An Archaeological Survey of the Bullocks Flat Skitube Development. Report to Phil McMaster Pty Ltd.
- Paton, R. (1985). An Archaeological Survey of the Proposed Alpine Way Re-alignment near Thredbo, NSW. Report to National Parks and Wildlife Service.
- Paton, R. (1988). An Archaeological Investigation of the Thredbo Telecom Valley Optical Fibre Cable Route. Report to David Hogg Pty Ltd.
- Oz Ark (2021). Snowy Mountains Special Activation Precinct - Aboriginal Cultural Heritage Assessment. Report to Snowy Monaro Council
- Walkington, M. (1987). An Archaeological survey of a 33kV transmission Line (no 2) from Bullocks Flat to Thredbo. Report to Monaro City Council.

A.1 AHIMS SITE SEARCH

AHIMS Web Services (AWS)

Extensive search - Site list report

Your Ref/PO Number : Crackenback ridge

Client Service ID : 951917

SiteID	SiteName	Datum	Zone	Easting	Northing	Context	Site Status **	SiteFeatures	SiteTypes	Reports
61-3-0024	Bogong Creek;	AGD	55	614714	5959332	Open site	Valid	Artefact : -	Open Camp Site	816
	<u>Contact</u>	<u>Recorders</u>		S.L Hodges				<u>Permits</u>		
61-3-0038	Bullocks Flat to Thredbo 10	AGD	55	618700	5960300	Open site	Valid	Artefact : -	Open Camp Site	1317,103116,103138
	<u>Contact</u>	<u>Recorders</u>		M Walkington				<u>Permits</u>		
61-6-0100	Ramshead Creek 2;	AGD	55	616290	5959060	Open site	Valid	Artefact : -	Open Camp Site	
	<u>Contact</u>	<u>Recorders</u>		Mr.Kelvin Officer				<u>Permits</u>		
61-3-0062	Alpine Way 7	AGD	55	617909	5959497	Open site	Valid	Artefact : -	Open Camp Site	2495,99160,99161,99162,99163,99164,99341,99487,99818,103116
	<u>Contact</u>	<u>Recorders</u>		Kerry Navin				<u>Permits</u>	2071,2072,2291,2326	
61-6-0083	Merritts Park, Site 1;	AGD	55	617150	5959550	Open site	Valid	Artefact : -	Open Camp Site	1417
	<u>Contact</u>	<u>Recorders</u>		Ms.N Fuller				<u>Permits</u>		
61-6-0081	Golf Course Extention Site 1;	AGD	55	615900	5958520	Open site	Valid	Artefact : -	Open Camp Site	1417
	<u>Contact</u>	<u>Recorders</u>		Ms.N Fuller				<u>Permits</u>		
61-6-0121	Merritts Creek 1	AGD	55	616850	5959500	Open site	Valid	Artefact : -		
	<u>Contact</u>	<u>Recorders</u>		Mr.Alistair Grinbergs				<u>Permits</u>		
61-3-0039	Bullocks Flat to Thredbo 11	AGD	55	618500	5960150	Open site	Valid	Artefact : -	Open Camp Site	1317,103116,103138
	<u>Contact</u>	<u>Recorders</u>		M Walkington				<u>Permits</u>		
61-6-0009	South Rams Head;Kosciusko N.P.;	AGD	55	613600	5958600	Open site	Valid	Artefact : -	Open Camp Site	468
	<u>Contact</u>	<u>Recorders</u>		John Gallard				<u>Permits</u>		
61-3-0138	Thredbo Walking Track 21	AGD	55	618380	5960092	Open site	Valid	Artefact : 1		101126,103116,103138
	<u>Contact</u>	<u>Recorders</u>		Mr.Alistair Grinbergs				<u>Permits</u>		
61-6-0104	Friday Flat 2	AGD	55	617800	5959710	Open site	Valid	Artefact : -	Isolated Find	99341
	<u>Contact</u>	<u>Recorders</u>		Kerry Navin,Mr.Kelvin Officer				<u>Permits</u>		
61-3-0065	Friday Flat IF-1;?;	AGD	55	617550	5959500	Open site	Valid	Artefact : -	Isolated Find	103116
	<u>Contact</u>	<u>Recorders</u>		P Saunders				<u>Permits</u>		
61-3-0021	Bogong Creek;No.1;Thredbo;	AGD	55	614500	5958800	Open site	Valid	Artefact : -	Open Camp Site	
	<u>Contact</u>	<u>Recorders</u>		Miss.Marjorie Sullivan				<u>Permits</u>		
61-3-0137	Thredbo Walking Track 20	AGD	55	618380	5960092	Open site	Valid	Artefact : 4		101126,103116,103138
	<u>Contact</u>	<u>Recorders</u>		Mr.Alistair Grinbergs				<u>Permits</u>		
61-3-0063	Alpine Way 8	AGD	55	618350	5960050	Open site	Valid	Artefact : -	Open Camp Site	2495,103116,103138
	<u>Contact</u>	<u>Recorders</u>		Kerry Navin				<u>Permits</u>		

Report generated by AHIMS Web Service on 19/11/2024 for Lyn O'Brien for the following area at Lot : 876, DP:DP1243112, Section : - with a Buffer of 1000 meters.. Number of Aboriginal sites and Aboriginal objects found is 22

This information is not guaranteed to be free from error omission. Heritage NSW and its employees disclaim liability for any act done or omission made on the information and consequences of such acts or omission.

AHIMS Web Services (AWS)

Extensive search - Site list report

Your Ref/PO Number : Crackenback ridge

Client Service ID : 951917

SiteID	SiteName	Datum	Zone	Easting	Northing	Context	Site Status **	SiteFeatures	SiteTypes	Reports
61-6-0103	EDI 1	AGD	55	616820	5959600	Open site	Valid	Artefact : -	Open Camp Site	4447
	<u>Contact</u>	<u>Recorders</u>	Charles Dearling Archaeological and Cultural Heritage Consultants					<u>Permits</u>		
61-3-0023	Bogong Creek;No.3;Thredbo;	AGD	55	614000	5957000	Open site	Valid	Artefact : -	Open Camp Site	
	<u>Contact</u>	<u>Recorders</u>	Miss.Marjorie Sullivan					<u>Permits</u>		
61-6-0099	Ramshead Creek 1;	AGD	55	616100	5958960	Open site	Valid	Artefact : -	Open Camp Site	
	<u>Contact</u>	<u>Recorders</u>	Mr.Kelvin Officer					<u>Permits</u>	668,675,1769	
61-6-0120	Rams Head	AGD	55	614180	5959030	Open site	Valid	Artefact : 6		
	<u>Contact</u> T Russell	<u>Recorders</u>	Mr.Edward Clarke					<u>Permits</u>		
61-3-0049	Crackenback Chairlift 1;	AGD	55	615170	5960500	Open site	Valid	Artefact : -	Open Camp Site	1912
	<u>Contact</u>	<u>Recorders</u>	Kerry Navin,Mr.Kelvin Officer					<u>Permits</u>		
61-6-0082	Merritts Park Nature Trail;Site 1;	AGD	55	616930	5959330	Open site	Valid	Artefact : -	Open Camp Site	1417
	<u>Contact</u>	<u>Recorders</u>	Ms.N Fuller					<u>Permits</u>		
61-6-0139	TGC1	GDA	55	616182	5958901	Open site	Valid	Artefact : -, Potential Archaeological Deposit (PAD) : -		
	<u>Contact</u>	<u>Recorders</u>	Ms.Lyn O'Brien,Past Traces Pty Ltd					<u>Permits</u>		

** Site Status

Valid - The site has been recorded and accepted onto the system as valid

Destroyed - The site has been completely impacted or harmed usually as consequence of permit activity but sometimes also after natural events. There is nothing left of the site on the ground but proponents should proceed with caution.

Partially Destroyed - The site has been only partially impacted or harmed usually as consequence of permit activity but sometimes also after natural events. There might be parts or sections of the original site still present on the ground

Not a site - The site has been originally entered and accepted onto AHIMS as a valid site but after further investigations it was decided it is NOT an aboriginal site. Impact of this type of site does not require permit but Heritage NSW should be notified

Report generated by AHIMS Web Service on 19/11/2024 for Lyn O'Brien for the following area at Lot : 876, DP:DP1243112, Section : - with a Buffer of 1000 meters.. Number of Aboriginal sites and Aboriginal objects found is 22

This information is not guaranteed to be free from error omission. Heritage NSW and its employees disclaim liability for any act done or omission made on the information and consequences of such acts or omission.